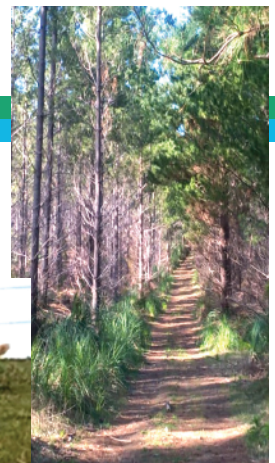
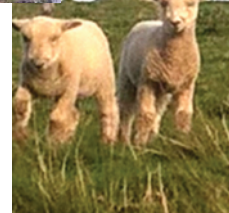
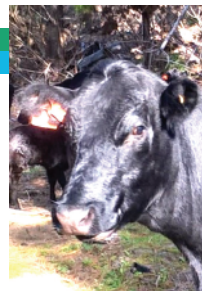




Annual Report 2016-2017





Ko te mihi

Ko te pā o te aitanga a Tiki

Ko te pā o te taitaia

Ko te pā o te tunga o te tōtara

Ko te ringa heketohunui o Tangaroa

Ko te whare o te mānuka

Ko te pokopoko o Rotu

Te aute, te āhea!

Hoinei te aroha

Ko ngā roimata maringiringi o Kaipara ki a rātou kua oiaia atutia ki te Pūtahitanga o Rehua. Ka kopangia rātou e Te Atua ki roto i ōna ringatotoro, okioki ai.

E kore tātou e hīkoi ana i te mata o te Ōtakanini Tōpū e wareware i a rātou.

Ki a tātou, ngā kanohi ora ō rātou mā

Hoinei te mihi maioha ki a tātou

Kia ora mai tātou katoa

Nā ka horahia te whenua neki o te Ōtakanini Tōpū e Te Atua ki ngā mātua tūpuna hei ōhākītanga mō tātou katoa.

Kia tūtonu tātou, e pupuri tonu ana i tō rātou ake rangātiratanga, i tō rātou mana hoki ki tēnei ao awhiowhio hei ramaroa mo nga whakatupuranga e heke mai nei..

Nō reira, ahakoa ka piki, ka heke te ahua ki waenga o tatou, ka mau tonu tātou i wō rātou wawata, ā, i wō rātou moemoeā ki te whenua kia whakakikokiko i ēnā, whakanikoniko ai.

Huri noa

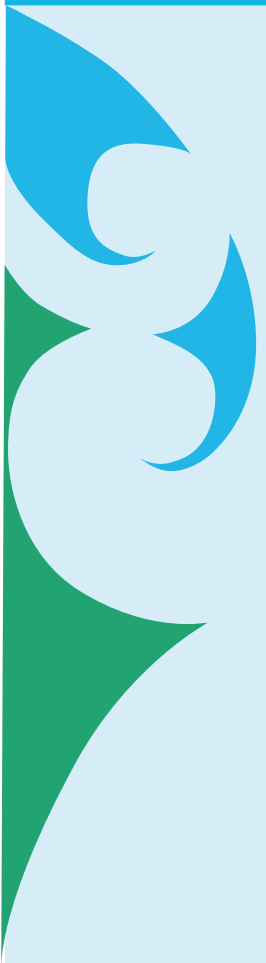
Toitū te whenua

Toitū te mana ā, toitū te tangata.

Tihei mauri ora!

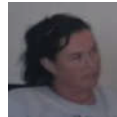


Ō T A K A N I N I T Ō P Ū



Committee of Management

- Glenn Wilcox Chair,
- Mei Hill
- Michelle Hill
- Awa Hudson
- Hemi Rau
- Lisa Reweti
- Julia Steenson*



Secretary - Pearl Hill

Farm Operations Manager - Ray Monk

Registered Office - 23 Neville Street, Warkworth, New Zealand

Farm Otakanini Topu 405 South Head Rd Helensville 0874
Makarau 2127 Kaipara Coast Highway, Warkworth 0984

*resigned May 2017



Annual General Meeting of the Ōtakanini Tōpū Incorporation.

Saturday 9 December 2017 at
Te Whare Oranga o Parakai, (*old Kaipara Tavern*
2/11 Moau St) , commencing at 10.00 am-1.00pm

Agenda

1. Receive & Confirm the minutes Of 2016 AGM
2. Receive the Financial Reports and Statements for 2016 - 2017
3. Adoption the auditor's report 2016-2017
4. Appointment of an auditor 2017 -2018 & Share Valuer
5. Election of one person to replace One Vacancy in the membership of the Committee of Management due to the resignation of Julia Steenson.
6. Authorise by resolution a dividend to Share-holders
7. Receive an update on the Marine & Coastal Areas Act 2011 Claim by the Otakanini Topu
8. Receive a presentation on a Whenua Rahui Proposal for the Kaituna Foreshore.
9. Consider matters, deemed appropriate by the Chair for general business



Contents

Chair's Report	5
Farm Operations Manager's Report	7
Overview of Financials	20
Ōtakanini Tōpū Incorporation AGM Minutes 2016	Attachment A
Ōtakanini Tōpū Inc Financial Statements for the year ended June 2017 *	Attachment B



*Refer to Withers Document Numbering



Chair's Report

E nga kahu pokere me nga karuhiruhi o te Kaipara nei, tena tatou!

It is a pleasure to present to you the Otakekani Topu Annual report for 2016/17. We have collectively worked through the many challenges that have arisen throughout the year and although most have been overcome, some remain before us, however the Committee of Management look forward with optimism to achieving an even better result in the coming year.

There has been continual improvement in the development of the business plan for the farm operations but we were impacted on our margins by the lower than anticipated lamb and wool returns and whilst our beef returns were steady we were marginally short of our budget. The coming year promises better returns for our lamb and the outlook is highly optimistic for our trading beef returns. The low return for wool continues to be an issue for all New Zealand growers and unfortunately we do not expect any change in the foreseeable future.

The Forest programme has continued throughout the year and we are now approaching the position as was mentioned in my last report, ie. the decision as to whether or not we hold the forest to its maturity or forward sell and invest part of the proceeds in acquiring additional farmland and distributing the balance of the funds.

The farm has continued to improve, moving away as part of our long term plan to a trading volume based system. The Makarau Calf Rearing Unit continues to present challenges financially but it is pleasing to report the dramatic drop in calf losses, this unit is an integral part of the overall operation and we are now concentrate on achieving a better financial result in order to gain the maximum value from our volume strategy, the Committee of Management will continue to monitor its progress closely.

The Maori Land Court issues in regards to the Share Audit are extremely concerning, our Share Registrar (Linda Lafaele) has continued to advocate to the Maori Land Court to bring the audit to a close by completing its own work. It is untenable that after 12 months no progress has been made by the Maori Land Court. The Committee has continuously sought prosecution of the audit determination so that we can begin the task of repairing issues caused as a result of the the Audit. Unfortunately to date, our pleas have been to no avail. Linda continually updates our share register however the information and systems of the Maori Land Court fall frustratingly short of what is required, leading to much frustration to whanau as well as to the Committee.

Otakekani Topu is able to deliver sustainable farming outcomes for us well into the future and the Whenua Rahui proposal is one of the environmental projects that will help us to achieve the standards required for compliance to the National Policy Statement on Freshwater and Coastal Policy Statements from government as well as the Auckland Council Unitary Plan Provisions.



The Otakanini Topu Marine & Coastal Area Claim has been accepted, however it can not be viewed in isolation from other developments concerning the Coastal Environment. Legal opinion is needed to determine our existing Moana Rights and as to whether or not the Ngati Whatua Harbour Claims or any other claim might extinguish or diminish our existing rights and Rangatiratanga to the Kaipara Harbour and the Moana Tapokopoko o Tawhaki (Tasman).

Once again I would like to thank our staff lead by our Manager and whanaunga Mr Ray Monk for their dedication & hard work, this year like every other year has been challenging for them all, as new systems & processes have been introduced. This has required a higher accountability and rigour from them in order to achieve the standards that are now required from a modern agricultural producer.

The Otakanini Topu has an affirmative policy of training and employing our own whanau, we should all be proud of the Otakanini Topu for creating these employment and training opportunities. Continual improvement in performance is now demanded from all, including the Committee of Management. I would like to thank all the Committee Members for rising to the challenges presented.

E whakahihi noa atu nei toku ngakau, e pupuri tonu ana tatou ki nga wawata o nga matua tupuna.

Tihe Mauri Ora!

Glenn Wilcox
Chair Committee of Management, Otakanini Topu Incorporated